

IMC Injectors

IMC Metering Systems

IMC Injectors

General Description:

Designed with fewer parts for simplicity, economy, and ease of maintenance in In Mold Coating operations

The compact EMC 2 Inc. injector offers 2 bolt mounting and simplified, low maintenance design to bring proven EMC² precision to your In Mold Coating operations. Two 1/4" NPT ports circulate water for cooling IMC material while a second pair of 1/4" ports allows you to recirculate the resin or flush the system. Water-cooling will keep the resin at a controlled temperature even though nearby mold temperatures may exceed 300 degrees F. Your resins remain at peak performance levels longer. Hydraulic ports open and close the injector, while the limit switch assembly, mounted on top of the injector, indicates open and close positions for injection and press sequencing. A standard 5 Pin Mini connector is used to connect the switches to the control system.

Features:

- Production proven since 1982
- Easy to use with any in-mold coating system
- Simple, 2 -Bolt mounting for easy set up
- Standard lengths in stock, custom lengths available to fit any mold
- No adjustments required for assembly
- Non-rotating pin feature for complex molds
- Limit switch assembly indicates open/closed positions
- A full range of tip sizes available
- 1/4" G-10 insulation disc reduces heat transfer
- Works with resin recirculation systems or standard solvent flush systems
- Standard replacement parts and seals in stock
- Can be used on conventional or high pressure IMC system

Specifications:

- 1/4" NPT resin and water ports
- 5 pin Brad Harrison connector #41310
- Weight: 18 pounds. (approximately)
- Body Length: Available from 3 1/2" to 30"
- Overall Length: 17 3/4" outside the mold + body length
- 3/8" hydraulic ports - Requires: 1500 PSI Hydraulic pressure
- Cooling water requirements - 60-70 degrees F @ 1/2 GPM

Options:

- Disconnects for the hydraulic connections
- Mounting spacer plates
- Adapter plates for replacing competitive products



dispensing
DEFINED

METER, MIX, DISPENSE SINCE 1977

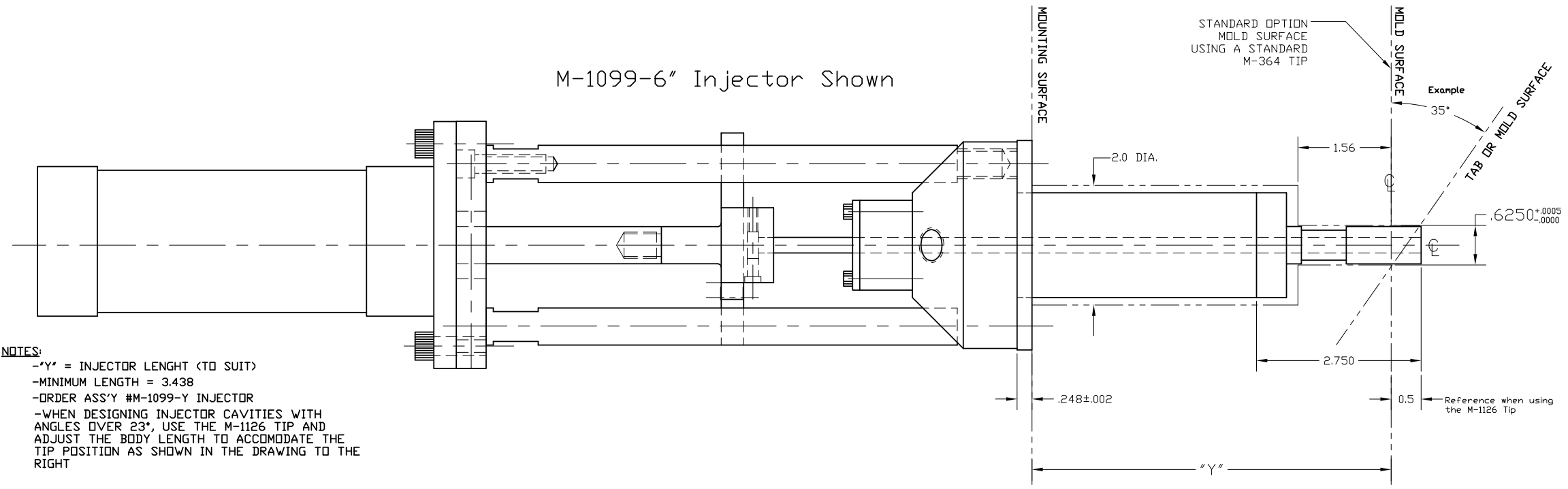
WWW.EMCSQUARED.COM

6855 19 MILE RD. STERLING HEIGHTS MI 48314 586.254.1525

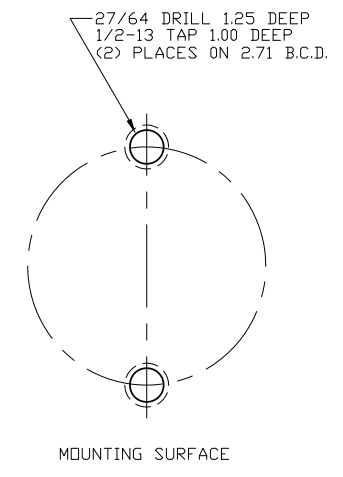
EMC²
INCORPORATED

REVISIONS			
REFERENCE #	DESCRIPTION	BY	DATE

M-1099-6" Injector Shown

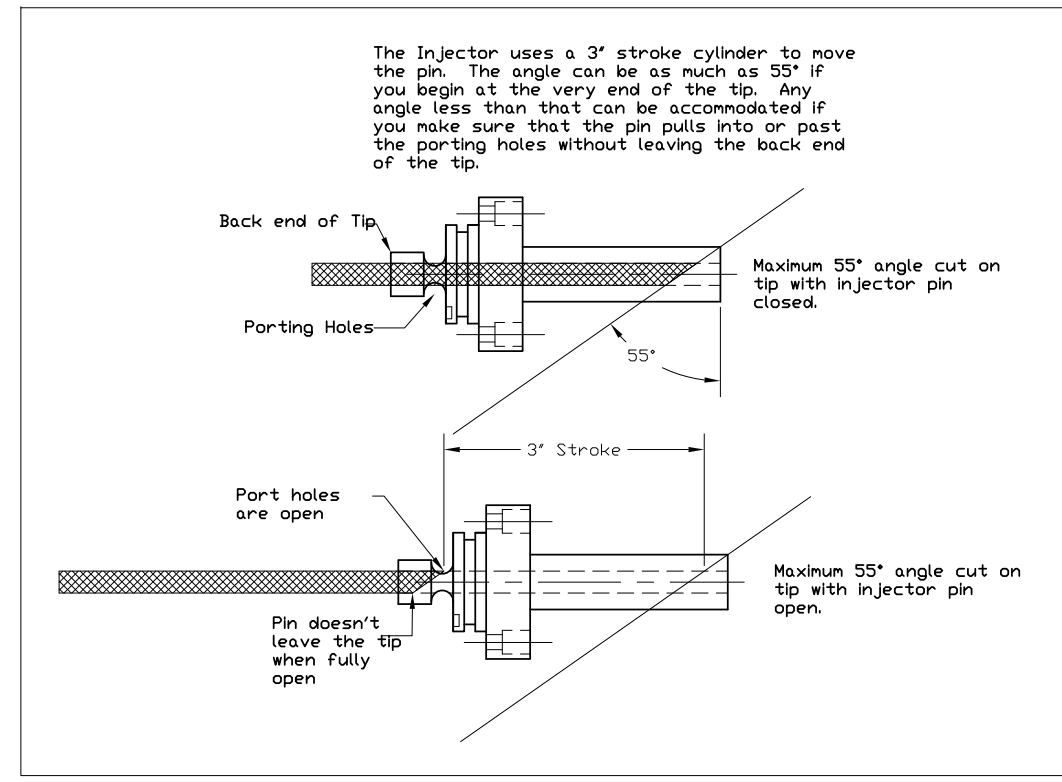


- NOTES:**
- "Y" = INJECTOR LENGTH (TO SUIT)
 - MINIMUM LENGTH = 3.438
 - ORDER ASS'Y #M-1099-Y INJECTOR
 - WHEN DESIGNING INJECTOR CAVITIES WITH ANGLES OVER 23°, USE THE M-1126 TIP AND ADJUST THE BODY LENGTH TO ACCOMMODATE THE TIP POSITION AS SHOWN IN THE DRAWING TO THE RIGHT

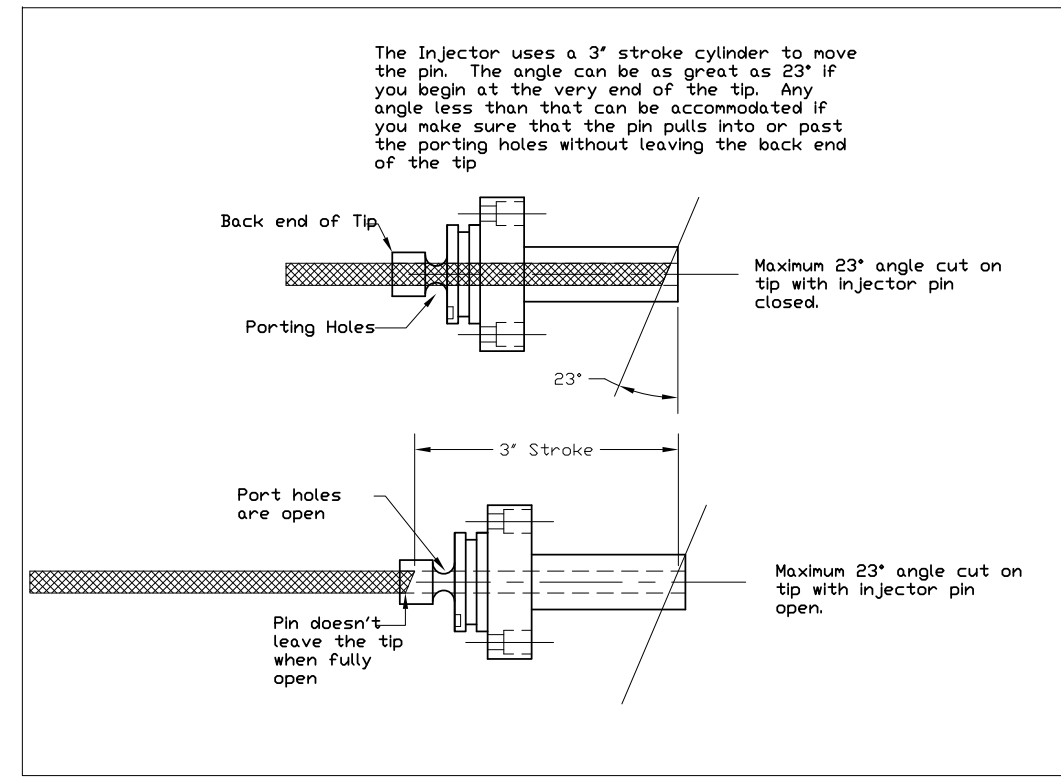


- * NOTE: OTHER TIPS**
- M-1126 FOR ANGLES GREATER THAN 23°
 - M-1151 STANDARD 1/2" O.D.
 - M-2156 1/2" O.D. FOR ANGLES GREATER THAN 45°

M-1126 Injector Tip Details



M-364 Injector Tip Details



CONFIDENTIAL: PROPERTY OF EMC 2 INC.
 THIS DOCUMENT CONTAINS PROPRIETARY AND TRADE SECRET INFORMATION WHICH IS TO BE USED ONLY FOR THE PURPOSE FOR WHICH IT HAS BEEN FURNISHED BY EMC 2 INC. IT IS NOT TO BE COPIED OR DISCLOSED WITHOUT PRIOR PERMISSION OF EMC 2 INC. THIS NOTICE SHALL APPEAR ON ANY COMPLETE OR PARTIAL REPRODUCTION OF THIS DOCUMENT.

DO NOT SCALE DRAWING	3rd ANGLE PROJECTION
DIMENSION TOLERANCES (UNLESS OTHERWISE SPECIFIED)	
MILLIMETRES	INCHES
1 PLACE ±0.3mm	2 PLACE ±0.01
2 PLACE ±0.13mm	3 PLACE ±0.005
3 PLACE ±0.013mm	4 PLACE ±0.0005

DET.	SHT.	QTY	DESCRIPTION	VENDOR

R **EMC² INC.** 6855 19 MILE RD. STERLING HEIGHTS, MI. 48314
 S WWW.EMCSQUARED.COM (586) 254-1525
 I CSERVICE@EMCSQUARED.COM

DESCRIPTION: INJECTOR DETAILS	DRAWING #
DET. BY B.S.	INJECTOR DETAILS
DATE 2/24/09	CUSTOMER
SCALE NONE	EMC 2 INC
JOB#	
LIT	

EMC # IIT